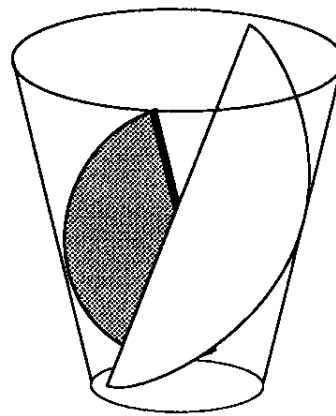
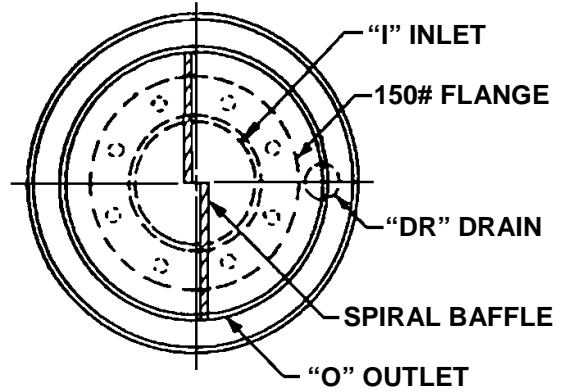
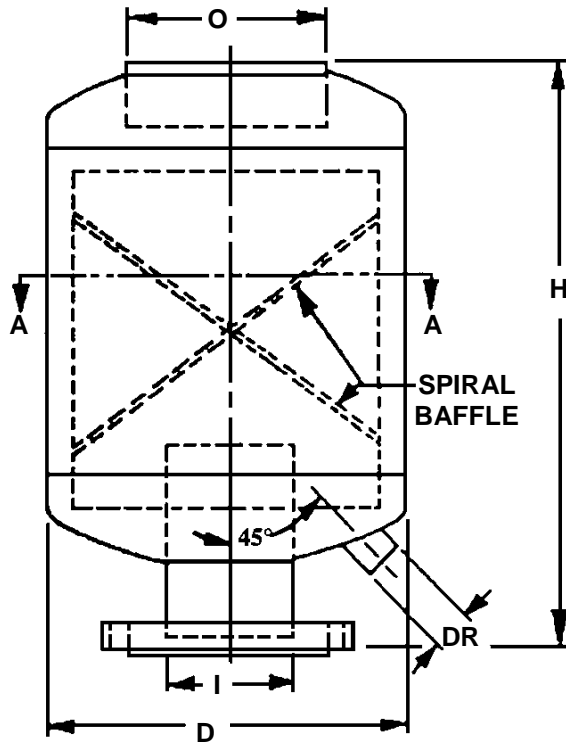


SPECIFICATION PRINT

Cyclone Exhaust Head



PERSPECTIVE VIEW OF SPIRAL BAFFLES

MATERIAL SPECIFICATIONS

HEADS 10-20 CARBON STEEL
 1/4" MIN. THICKNESS
 SHELL SA53B or API 5L
 LINE PIPE 1/4" MIN. THICKNESS
 FLANGE SA105 ANSI R.F.S.O.
 CPLING SA105
 FINISH 2 COATS HIGH HEAT
 ALUMINUM PAINT
 (INTERIOR & EXTERIOR)

Threaded units are available in 2-6" inlet sizes.
 Beveled units are available in all sizes.

DIMENSION CHART

MODEL NO.	I	O	DR	D	H	WT. FLNG
EX 10-2	2"	6"	3/4"	10"	21"	85#
EX 10-2 1/2	2-1/2"	6"	3/4"	10"	21"	90#
EX 10-3	3"	6"	3/4"	10"	21"	95#
EX 10-4	4"	6"	1"	10"	21"	105#
EX 14-5	5"	8"	1-1/2"	14"	21"	140#
EX 14-6	6"	8"	1-1/2"	14"	21"	160#
EX 20-8	8"	10"	2"	20"	26"	310#
EX 20-10	10"	12"	2"	20"	26"	330#
EX 24-12	12"	14"	3"	24"	30"	485#
EX 24-14	14"	16"	3"	24"	30"	525#
EX 26-16	16"	18"	3"	26"	38"	685#
EX 36-18	18"	20"	3"	36"	54"	1130#
EX 42-20	20"	24"	3"	42"	58"	1800#
EX 42-24	24"	30"	3"	42"	58"	1875#
EX 48-30	30"	36"	4"	48"	65"	2035#
EX 54-36	36"	42"	4"	54"	75"	2710#



Penn Separator Corp.

PO Box 340, Brookville, PA 15825

Cyclone Exhaust Head

MJG 11/18/08 Rev. 3 A55132-3